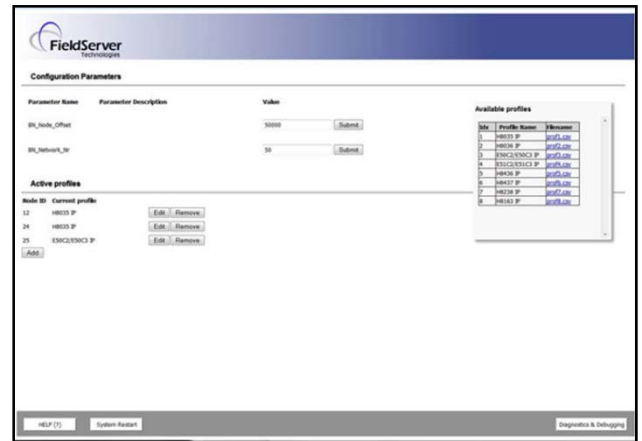


“Profiles” makes it easy for the operator to map protocols with pre-defined configurations. Once a profile (Configuration File) has been developed the user simply needs to open the FieldServer Configuration Parameters page (included in each QuickServer, SlotServer or FS-B35Series gateway) and select the profile desired from the list of available profiles. The advantage of course is that this feature makes it extremely easy and fast to set up the gateway for a specific application. There are a number of profiles that have already been established and are listed below.



**Profiles benefits:**

- ✓ Quickly configures your FieldServer gateway with the necessary configurations, without spending time writing a profile every time it is needed.
- ✓ Each Device Profile can support one or multiple of the same or different controllers connected to the FieldServer gateway.
- ✓ Makes sure that the configuration is correct each time it is used.

**Device Profiles**

Released profiles are currently available for the following products. Device Profiles continue to be built for new devices so continue to check <http://www.fieldserver.com/techsupport/profiles.php> for the latest information. For each profile, FieldServer has produced a subset of the available points. If a variation of the points in the profile is required,

ABB		
Devices	Host protocol	Server Protocol
M2M Modbus	Modbus RTU	BACnet/IP or BACnet MS/TP
M2M Ethernet	Modbus TCP	BACnet/IP or BACnet MS/TP
DMTME-1-485	Modbus RTU	BACnet/IP or BACnet MS/TP
DMTME-1-485-72	Modbus RTU	BACnet/IP or BACnet MS/TP
DMTME-1-485-96	Modbus RTU	BACnet/IP or BACnet MS/TP
ANR-LAN	Modbus TCP	BACnet/IP or BACnet MS/TP

Annexair		
Devices	Host protocol	Server Protocol
Controls	Modbus RTU	BACnet/IP or BACnet MS/TP

GE		
Devices	Host protocol	Server Protocol
EMP2200	Modbus RTU	BACnet/IP or BACnet MS/TP
EPM5500P	Modbus RTU	BACnet/IP or BACnet MS/TP
EPM6000	Modbus RTU	BACnet/IP or BACnet MS/TP
EPM6000	Modbus RTU	BACnet/IP or BACnet MS/TP
EPM 9450	Modbus RTU	BACnet/IP or BACnet MS/TP
EPM 9450	Modbus TCP	BACnet/IP or BACnet MS/TP
EPM 9650	Modbus RTU	BACnet/IP or BACnet MS/TP
EPM 9650	Modbus TCP	BACnet/IP or BACnet MS/TP

Kohler		
Devices	Host protocol	Server Protocol
Decision Maker 3+	Modbus RTU	BACnet/IP or BACnet MS/TP
Decision Maker 340	Modbus RTU	BACnet/IP or BACnet MS/TP
Decision Maker 550	Modbus RTU	BACnet/IP or BACnet MS/TP
Decision Maker 3000	Modbus RTU	BACnet/IP or BACnet MS/TP

Eltek UPS		
Devices	Host protocol	Server Protocol
SmartPack	Modbus RTU	BACnet/IP or BACnet MS/TP

Catepillar		
Devices	Host protocol	Server Protocol
EMCP3 Genset	Modbus RTU	BACnet/IP or BACnet MS/TP
EMCP4 Genset	Modbus RTU	BACnet/IP or BACnet MS/TP

APC UPS		
Devices	Host protocol	Server Protocol
Inrow IEC 309-16	Modbus RTU	BACnet/IP or BACnet MS/TP
Decision Maker 6000	Modbus RTU	BACnet/IP or BACnet MS/TP

## FieldServer Data Sheet - Profiles

Liebert		
Devices	Host protocol	Server Protocol
EXC	Modbus RTU	BACnet/IP or BACnet MS/TP
FDC	Modbus RTU	BACnet/IP or BACnet MS/TP
FPC	Modbus RTU	BACnet/IP or BACnet MS/TP
RD	Modbus RTU	BACnet/IP or BACnet MS/TP

Mcquay		
Devices	Host protocol	Server Protocol
200CFC	Microtech	BACnet/IP or BACnet MS/TP
100CFC	Microtech	BACnet/IP or BACnet MS/TP
050RPC	Microtech	BACnet/IP or BACnet MS/TP
001ASC	Microtech	BACnet/IP or BACnet MS/TP
000SCU	Microtech	BACnet/IP or BACnet MS/TP
C Vintage Water-Cooled "Flooded" Screw Chiller	Microtech	BACnet/IP or BACnet MS/TP
RMC VAV One Stg Heat	Microtech	BACnet/IP or BACnet MS/TP
RMC VAV One Stg Heat	Microtech	BACnet/IP or BACnet MS/TP
Sp Pressure Ctrl		
RMC VAV Mod Heat	Microtech	BACnet/IP or BACnet MS/TP
RMC VAV Mod Heat		
Space Pressure Ctrl	Microtech	BACnet/IP or BACnet MS/TP
RMC Const Vol Return	Microtech	BACnet/IP or BACnet MS/TP
Air Zone Ctrl		
RMC Const Vol Return	Microtech	BACnet/IP or BACnet MS/TP
Sup Air Temp Ctrl		
RMC Const Vol 100%	Microtech	BACnet/IP or BACnet MS/TP
OA Zone Ctrl		
RMC Const Vol 100%	Microtech	BACnet/IP or BACnet MS/TP
OA Sup Air Temp Ctrl		

Mestex		
Devices	Host protocol	Server Protocol
DFNR Z583	Modbus RTU	BACnet/IP or BACnet MS/TP

PACO Pumps		
Devices	Host protocol	Server Protocol
Pump 10-2930	Modbus RTU	BACnet/IP or BACnet MS/TP

Trane		
Devices	Host protocol	Server Protocol
CVHF Chiller	LonWorks	BACnet/IP

Walchem		
Devices	Host protocol	Server Protocol
WebMaster ONE	Modbus RTU	BACnet/IP or BACnet MS/TP

Schneider Electric		
Devices	Host protocol	Server Protocol
ION6200	Modbus RTU	BACnet/IP or BACnet MS/TP
ION6200	Modbus RTU	BACnet/IP or BACnet MS/TP
ION8600	Modbus RTU	BACnet/IP or BACnet MS/TP
ION8650	Modbus RTU	BACnet/IP or BACnet MS/TP
PM210	Modbus RTU	BACnet/IP or BACnet MS/TP
PM700	Modbus RTU	BACnet/IP or BACnet MS/TP
PM800	Modbus RTU	BACnet/IP or BACnet MS/TP
PM800	Modbus RTU	BACnet/IP or BACnet MS/TP
PM1200	Modbus RTU	BACnet/IP or BACnet MS/TP

Thermal Edge		
Devices	Host protocol	Server Protocol
XJ485CX	Modbus RTU	BACnet/IP or BACnet MS/TP

WattNode		
Devices	Host protocol	Server Protocol
WNC-3Y-208-MB	Modbus RTU	BACnet/IP or BACnet MS/TP
WNC-3Y-400-MB	Modbus RTU	BACnet/IP or BACnet MS/TP
WNC-3Y-480-MB	Modbus RTU	BACnet/IP or BACnet MS/TP
WNC-3Y-600-MB	Modbus RTU	BACnet/IP or BACnet MS/TP
WNC-3D-240-MB	Modbus RTU	BACnet/IP or BACnet MS/TP
WNC-3D-400-MB	Modbus RTU	BACnet/IP or BACnet MS/TP
WNC-3D-480-MB	Modbus RTU	BACnet/IP or BACnet MS/TP
WNC-3Y-208-FT10	LonWorks	BACnet/IP or BACnet MS/TP
WNC-3Y-400-FT10	LonWorks	BACnet/IP or BACnet MS/TP
WNC-3Y-480-FT10	LonWorks	BACnet/IP or BACnet MS/TP
WNC-3Y-600-FT10	LonWorks	BACnet/IP or BACnet MS/TP
WNC-3D-240-FT10	LonWorks	BACnet/IP or BACnet MS/TP
WNC-3D-400-FT10	LonWorks	BACnet/IP or BACnet MS/TP
WNC-3D-480-FT10	LonWorks	BACnet/IP or BACnet MS/TP

Weishaupt Burner		
Devices	Host protocol	Server Protocol
Burner Controller	Modbus RTU	BACnet/IP or BACnet MS/TP