



FieldServer ENOTE

Using Wireshark to Discover a FieldServer IP Address

Document Revision: 3.A
Date: 3/18
T18015

1 PROCEDURE

The instructions below describe how to use Wireshark to discover the IP Address of a FieldServer. This will work for the following FieldServer gateways: QuickServer, ProtoNode and ProtoCessor.

1.1 Connections

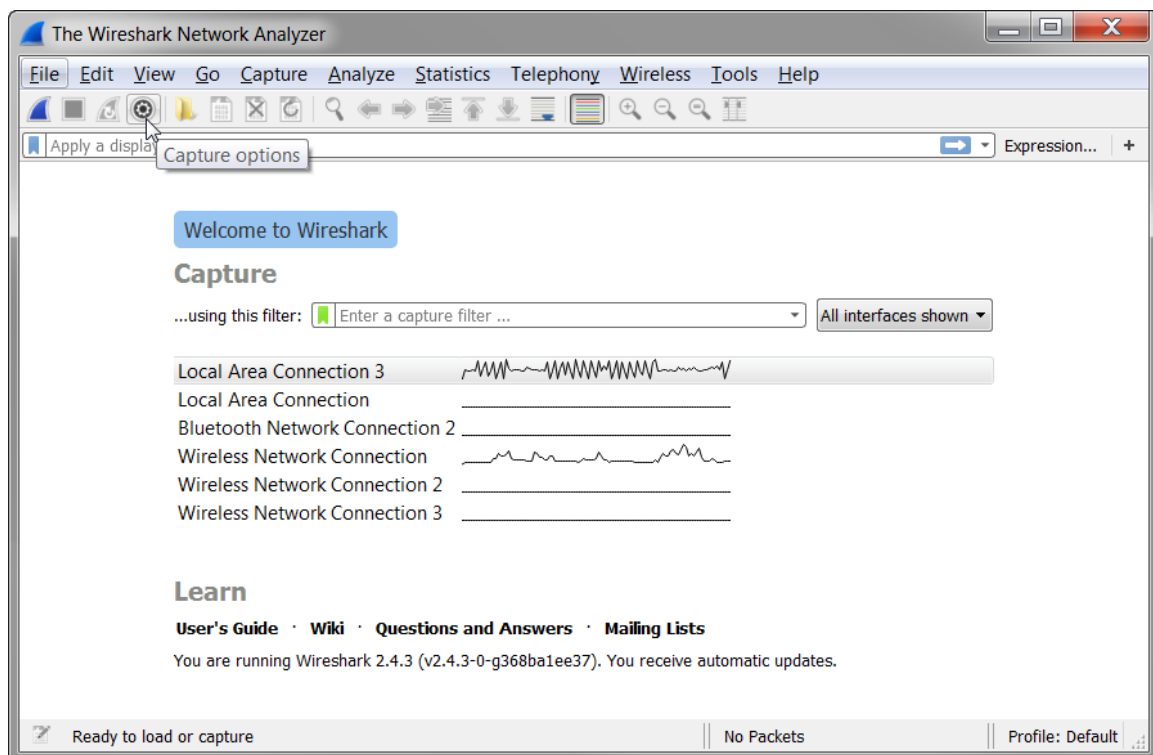
Connect the FieldServer directly to the PC using a standard CAT5 cable.

1.2 Installing Wireshark

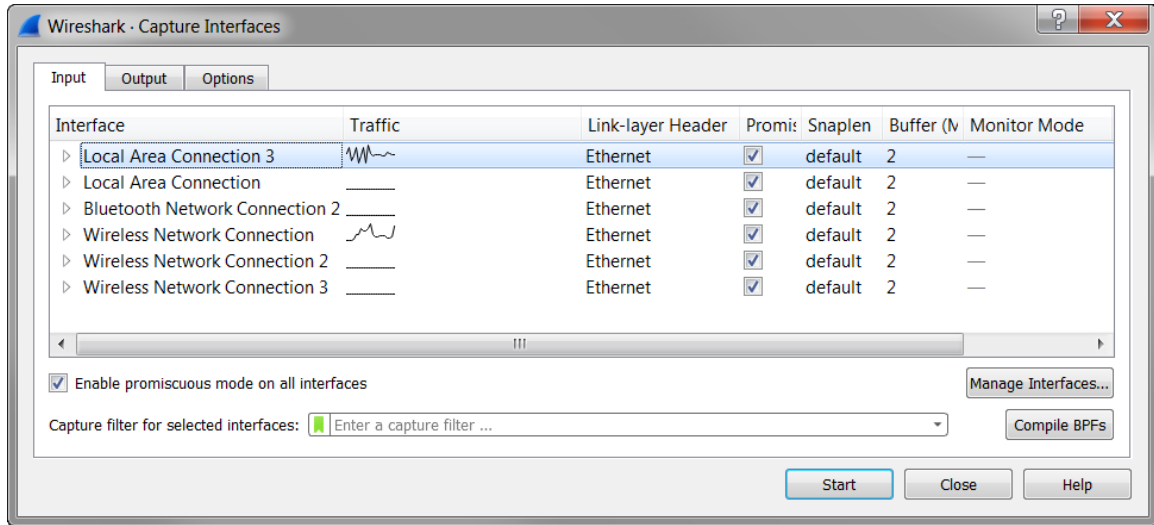
- Go to www.wireshark.org/download.html to access the download page.
- Select the download site for your operating system.
- Download the Wireshark setup file, also install WinPcap by checking the install box.
- Run the executable.

1.3 Obtaining the IP Address

- Open Wireshark.
- Click on the 'Capture Options' button on the top left.

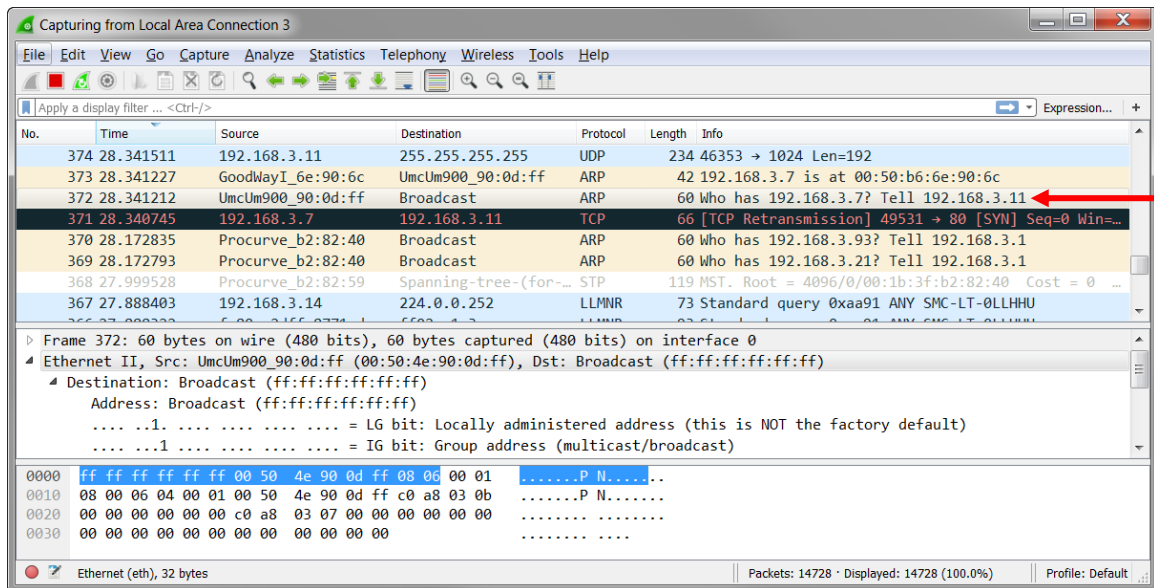


- Go to the Interface option and select the Ethernet adapter from the menu.



- Click on the 'Start' button.
- Power up the FieldServer.
- Wait until the run LED starts flashing once per second. When the run LED starts flashing the FieldServer will send a broadcast with the IP Address in the info column. When this occurs, stop the capture and search for the packet with the IP Address in the info column after the word "Tell".

NOTE: The packet will come from a source that is "UmUm900_<last 3 bytes or 6 hexadecimal characters of the FieldServer MAC Address>". For example, the image above shows "UmUm900_90:0d:ff".



Technical Support

Thank you for purchasing the FieldServer from Sierra Monitor Corporation.

Please call us for any technical support needs related to the FieldServer product.

Sierra Monitor Corporation
1991 Tarob Court
Milpitas, CA 95035

Website: www.sierramonitor.com

U.S. Support Information:

+1 408 964-4443

+1 800 727-4377

Email: support@sierramonitor.com

EMEA Support Information:

+31 33 808 0590

Email: support.emea@sierramonitor.com